



ARIZONA HEALTHY COMMUNITIES CONFERENCE

The Intersection Of Health And Community Development

March 19, 2014
9:00 a.m. - 4:30 p.m.
East Valley Institute of Technology
Mesa, Arizona



Gold Sponsors (\$5,000)



St. Luke's Health Initiatives

A Catalyst for Community Health

Alliance Bank

OF ARIZONA



NATIONAL BANK OF ARIZONA

Silver Sponsors (\$2,500)



ARIZONA
COMMUNITY FOUNDATION



THE KRESGE FOUNDATION



Supporter Sponsors (\$1,000)

ARIZONA MULTIBANK
Community Development Corporation

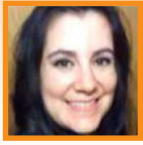
GORMAN
& COMPANY, INC.



ARIZONA HEALTHY COMMUNITIES CONFERENCE AGENDA • March 19, 2014

- 8:30 - 9:00 a.m.** **Registration and Continental Breakfast**
- 9:00 - 9:30 a.m.** **Welcome & Opening Remarks**
Dr. David J Erickson, PhD, Director, Center for Community Development Investments, Federal Reserve Bank of San Francisco
- 9:30 - 10:15 a.m.** **Keynote Speaker**
Dr. Douglas Jutte, Executive Director, National Partnership for Community Development and Health and Assistant Professor, University of California, Berkeley School of Public Health
- 10:15 - 10:30 a.m.** **Break**
- 10:30 - 12:00 p.m.** **Implementing Healthy Communities through Policy**
Three different approaches to local policy development that support healthy communities.
Lupita Banuelos, Community Outreach Specialist, Navajo County Public Health Services
Daniel Culotta, Environmental Program Manager, City of Avondale
Gloria Munoz, Executive Director, Housing Authority of Maricopa County
Moderator: Teresa Brice, Executive Director, LISC Phoenix
- 12:00 - 12:30 p.m.** **Break**
- 12:30 - 1:15 p.m.** **Lunch**
- 12:45 - 1:15 p.m.** **Lunch Speaker**
Yael Lehmann, Executive Director, The Food Trust
- 1:15 - 2:30 p.m.** **Connecting Transportation to Healthy Living**
Learn about transit oriented development and other local approaches that connect access to transportation and community health.
Emily Yetman, Executive Director, Living Streets Alliance
Nanette Slusser, Assistant County Administrator, Pima County
Alan Stephenson, Interim Planning Director, City of Phoenix
Moderator: John Moon, District Manager, Community Development, Federal Reserve Bank of San Francisco
- 2:30 - 2:45 p.m.** **Break**
- 2:45 - 3:45 p.m.** **Integrating Health and Housing: A Case Study**
Beckett House is a 100-unit independent living project for seniors. Hear about its challenges and opportunities for integrating housing and health.
Stephen Hastings, Chief of Real Estate Services, Foundation for Senior Living
Judi Greene, Director of Housing, Foundation for Senior Living
Douglas Whitneybell, President, Whitneybell Perry, Inc.
Moderator: Dr. Fred Karnas, Social Investment Officer, Kresge Foundation
- 3:45 - 4:30 p.m.** **Bring It All Together in Arizona - Organizing for Collaborative Action**
Participate in the process of determining the next best steps for creating healthier communities in Arizona.
Facilitators: Cassandra O'Neill and Sarah Griffiths, Wholonomy Consulting, LLC
- 4:30 p.m.** Adjourn

Speaker Bios



Lupita Banuelos received a Bachelor of Science in Healthcare Administration from the University of Phoenix and is currently pursuing her Master of Public Health from Grand Canyon University. As the Community Outreach Specialist, Ms. Banuelos focuses on policy management and policy initiatives in targeting health disparities across Navajo County with the Health in Arizona Policy Initiative (HAPI), a collaboration with the Arizona Department of Health Services.



Teresa Brice, an Arizona native, is a respected professional in the non-profit sector with a long history in the field of community development and affordable housing. Ms. Brice was selected as a Loeb Fellow at the Harvard Graduate School of Design for 2005-2006. In 2006 Ms. Brice was selected as the Executive Director of LISC Phoenix and has led the office's successful Foreclosure Initiative, the development of the Neighbors United Sustainable Communities program, and the formation of the Sustainable Communities Work Group in the Phoenix metropolitan area.



Daniel Culotta is the Environmental Program Manager for the City of Avondale. His duties involve managing environmental regulatory programs, and creating the City's first sustainability plan. Daniel's primary interests include strategic systems planning and participatory intervention selection processes for creating healthy, sustainable cities. He also cofounded a sustainability tech startup. Mr. Culotta holds a MA in Sustainability from Arizona State University and a BA in Anthropology from the University of Texas.



Dr. David Erickson is director of the Center for Community Development Investment at the Federal Reserve Bank of San Francisco and edits the Federal Reserve journal Community Development Investment Review. Erickson has a Ph.D. in history from the University of California, Berkeley. He also holds a master's degree in public policy from Berkeley and an undergraduate degree from Dartmouth College. He is a leader in the collaboration between the Federal Reserve and the Robert Wood Johnson Foundation, bringing health together with community development.



Judi Greene became involved in the housing industry in 1980 when she accepted a position with A.G. Spanos, a builder of large market properties in the Southwest. For the past ten years, Judi has dedicated her skills and attention to the low income and affordable housing mission with the Foundation for Senior Living where she is the Director of Housing.



Stephen Hastings is the Director of the Real Estate Services Division of the Foundation for Senior Living. The Foundation is a leading nonprofit proponent of Green Technology building, energy efficiency, PV Solar and Universal Design. His formal education includes a degree from Wichita State University in Real Estate and Land Use Economics and appraisal training from the American Institute of Real Estate Appraisers.



Dr. Douglas Jutte is a physician and population health researcher. He is an assistant professor in the Division of Community Health and Human Development in UC Berkeley's School of Public Health. He teaches in the UC Berkeley-UCSF Joint Medical Program and is Associate Director of the Health and Medical Sciences master's degree program. Jutte received his MD from Harvard Medical School; he also has a Master in Public Health from UC Berkeley and a BA from Cornell University. His post-doctoral research training was through the Robert Wood Johnson Foundation Health & Society Scholars program.



Dr. Fred Karnas joined The Kresge Foundation in 2013 and serves as a Social Investment Officer working with the Health and Human Services programs. Prior to joining Kresge, he served as President and CEO of St. Luke's Health Initiatives. Dr. Karnas provided leadership for grant-making, policy analysis, capacity building and community development work, all focused on creating healthy communities. He holds a bachelor's of city planning degree from the University of Virginia School of Architecture, a master's of social work degree and a certificate in gerontology from Virginia Commonwealth University, and a doctoral degree from the College of Architecture and Urban Studies at Virginia Tech.

Speaker Bios



As Executive Director of The Food Trust, **Yael Lehmann** directs a range of innovative programs to increase access to affordable healthy food in underserved communities and ensure that children and adults have the knowledge to make healthy food choices. Under Ms. Lehmann's leadership, The Food Trust has been the recipient of many local and national awards, and Time Magazine described the agency as being a "remarkable success" for increasing the availability of fresh produce in schools and cutting by 50% the number of overweight students. She has a bachelor's degree from the University of California, Berkeley and a master's from the University of Pennsylvania's School of Social Policy and Practice.



John Moon joined the Federal Reserve Bank of San Francisco in 2012 and directs the strategic activities of the field team. He has extensive community development experience in the public and private sectors including work at Living Cities, the Federal Reserve Board of Governors, the CDFI Fund, the City of Seattle, Federal Home Loan Bank of Seattle, and Fleetbank. John earned his bachelor's degree from UCLA and a Master in Public Policy from the Kennedy School of Government at Harvard University.



Gloria Munoz is the Executive Director of the Housing Authority of Maricopa County. She provides leadership for the management of over 900 units of public housing, three tax credit developments and 2,200 section 8 vouchers, including two project based section 8 contracts. Ms. Munoz has more than 32 years of experience in affordable housing finance, acquisition, management and development. Her experience includes working with the Chavez Foundation, State of Arizona, FDIC and RTC and the Southwest Region of Mercy Housing, Inc.



Nanette Slusser directly oversees Pima County's \$2.2 billion capital program. In addition, Ms. Slusser provides policy recommendations for program and project development, process improvement guidance specific to capital project delivery, financial management and mentoring for specific program areas, and management oversight of individual functional areas. Ms. Slusser is a native Tucsonan. She attended the University of Arizona and has undergraduate degrees in both clinical healthcare and business and a master's degree in landscape architecture.



As Acting Planning & Development Department Director, **Alan Stephenson** ensures that safe and legal structures are built in Phoenix and guides the physical development of the city. Planning deals with issues from the block level to the regional level within a time frame of today to 25-plus years with significant citizen input. The Development Division issues building permits and reviews and approves all public and private construction projects, from single-family homes to office buildings, and remodeled businesses to high rises. He earned his Master of Environmental Planning and a Bachelor of Arts in Political Science at Arizona State University.



Douglas T. Whitneybell is President of Whitneybell Perry Architecture & Planning, an Arizona firm specializing in multi-family design. Mr. Whitneybell is a long-time Phoenix resident with an established history of community and industry commitment and recognition for his design work. He most recently was named to the Arizona State Board of Technical Registration by Governor Brewer.



Emily Yetman is Executive Director and co-founder of Living Streets Alliance, a Tucson-based non-profit organization whose mission is to promote healthy communities by empowering people to transform our streets into vibrant places for walking, bicycling, socializing and play. She received her Master of Landscape Architecture from the University of Arizona in 2011.



Sarah Griffiths, Wholonomy Consulting, applies strengths based approaches to change processes by blending her knowledge of brain research, coaching and best practices. She has a M.F.A. in Creative Writing from Purdue University and a B.A. Honors in Philosophy and English Literature from University of Sussex.



Cassandra O'Neill, Wholonomy Consulting, has over 25 years of experience working with organizations in the social sector providing consulting services to over 150 organizations. She is Co-President Elect of the Arizona Evaluation Network. She has worked for state agencies in two states, the National Governors' Association and the Association of State and Territorial Health Officials.

We are proud to support the Arizona Healthy Communities Conference benefiting the **Arizona Housing Alliance.**

602.386.5500

alliancebankofarizona.com



A division of Western Alliance Bank. Member FDIC.

Alliance Bank

OF ARIZONA

Arizona's largest locally-owned and headquartered bank.



2/14



2014 Healthy Communities Conference

National Bank of Arizona is proud to be a part of the 2014 Healthy Communities Conference. We are committed to the overall health of the communities we serve, and believe that banking is a local business best delivered by those who are actively engaged within their community.



NATIONAL BANK OF ARIZONA

WWW.NBARIZONA.COM | MEMBER FDIC

Let's Break the Mold



Working together, we can create a better,
healthier recipe for Arizona's communities



St. Luke's Health Initiatives

A Catalyst for Community Health

We've got challenges and big goals ahead of us – and cookie cutter solutions aren't cutting it. But by working together, we can help each other develop smarter, more sustainable solutions that lead to healthier outcomes for Arizona. More cooks in the kitchen can be a very good thing. www.slhi.org

Notes

ARIZONA HEALTHY COMMUNITIES CONFERENCE PLANNING COMMITTEE

Co-Chairs

CJ Eisenbarth Hager, St. Luke's Health Initiatives
Valerie Iverson, Arizona Housing Alliance
Jane Pearson, LISC Phoenix

Committee Members

Alan Bergen, Pima County Health Department
Dean Brennan, Arizona State University
Joselyn Cousins, Federal Reserve Bank of San Francisco
David Dube, Maricopa County Department of Public Health
Jon Ford, St. Luke's Health Initiatives
Andrew Gordon, Arizona MultiBank Community Development Corporation
Alex Gutierrez, Pima County Health Department
Javier Herrera, Pima County Health Department
Amy Jacobson, Maricopa County Human Services Department
Martha Martin, Pima County Housing Center
Erika Mazza, Arizona Transit Association
Cynthia Melde, Arizona Department of Health Services
Kathleen Pechman, National Bank of Arizona
Michele Scanze, Arizona Department of Health Services
Ursula Strephans, Maricopa County Human Services Department
Betty Villegas, Pima County Housing Center
Sylvia Waynick, Arizona Housing Alliance
Keva Womble, Arizona Community Foundation
Cree Zischke, JP Morgan Chase



For More Information

Arizona Housing Alliance
125 N 2nd Street, Ste 110, #111
Phoenix, AZ 85004
Email: info@azhousingalliance.org
www.azhousingalliance.org

LISC Phoenix
111 W. Monroe, Ste 720
Phoenix AZ 85003
Email: sbrewer@lisc.org
www.lisc.org/phoenix

St. Luke Health Initiatives
2929 N. Central Ave, Ste 1550
Phoenix, AZ 85012
Email: info@slhi.org
www.slhi.org